



## TL-SMRSPR



Recessed or Surface or Suspended profile light fixture. Fitting manufactured according to the EN / IEC 60598-1:2015 rules.

Longer life (L80 B20 @ 50,000 hours)

Body Type: Aluminium

Diffuser: Pc

Light Source: Philips or Equivalent

Driver: Philips / Meanwell or Equivalent

Input Voltage: 220-240VAC 50/60HZ

Driver Protection: Class I

Operating Temperature: - 10°C + 40°C

Beam Angle: 115° & other on Request.

Body Color: White, Black or Grey

IP Rating: IP20

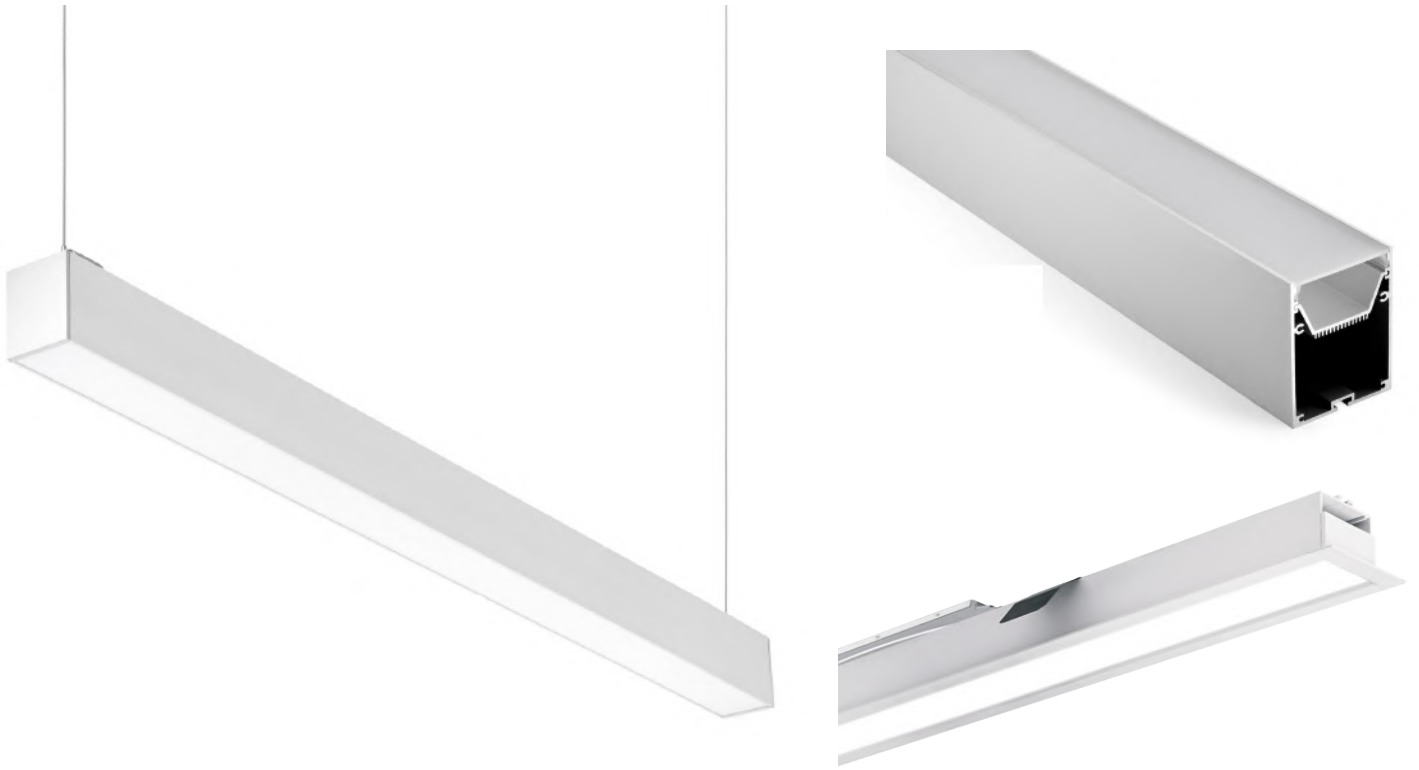
Dimmable: Dali

On Request: Other Wattage & Customized Profile Lengths



**PHILIPS**  
**TRIDONIC**  
**CREE** 





## Product Variants

Product Code	Wattage	Lumen	Efficiency	CCT	Dimension
TL-SMPR-10	10W	1000 lm	100lm/W	3000K-6500K	L1000xW55xH70MM
TL-SMPR-20	20W	2000 lm	100lm/W	3000K-6500K	L1000xW55xH70MM
TL-RSPR-10	10W	1000 lm	100lm/W	3000K-6500K	L1000xW65xH35MM
TL-RSPR-20	20W	2000 lm	100lm/W	3000K-6500K	L1000xW65xH35MM

