



## TL-WPSLY1



Weatherproof Surface or Suspended fixture. Fitting manufactured according to the EN / IEC 60598-1:2015 rules.

Longer life (L80B10 @ 50,000 hours)

Body / Diffuser : ABS / PC

Light Source: Philips

Driver: Templux

Input Voltage: 200- 240V AC, 50-60 HZ

Operating Temperature: - 20°C + 55°C

Beam Angle: 120°

IP Rating: IP65

Body Color: White / Grey

Dimmable: 1-10V & Dali

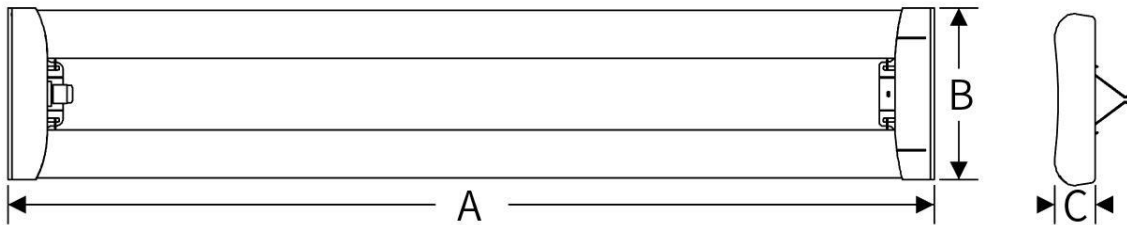
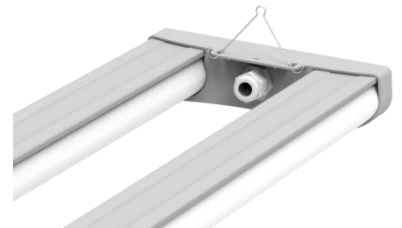
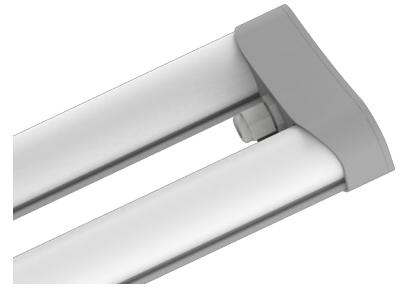
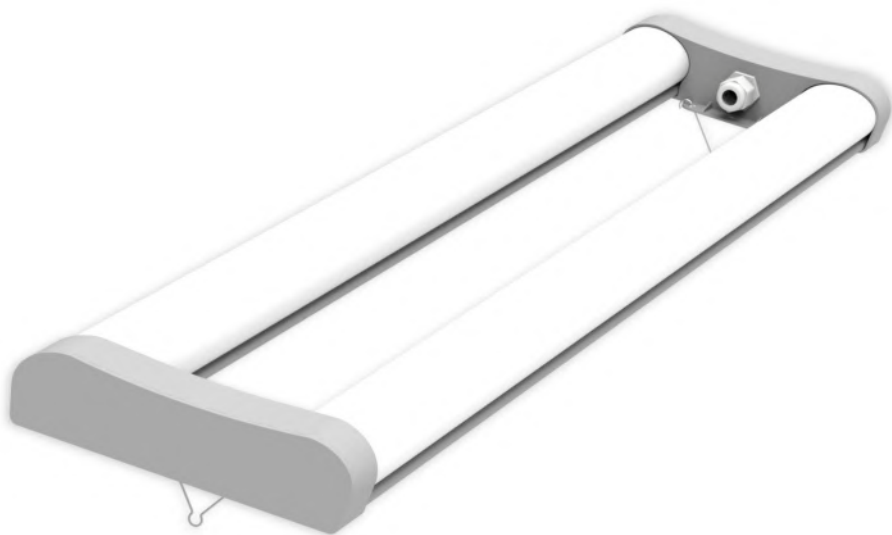
Sensor: Microwave Sensor

On Request: Other Wattage & Dimension Variants



# PHILIPS





### Product Variants

Product Code	Wattage	Lumen	Efficiency	CCT	Dimension (AXBXC) MM
TL-WPSLY1-01	60W	6600 lm	110lm/W	3000K/6000K	1205X214X51
TL-WPSLY1-02	80W	8800 lm	110lm/W	3000K/6000K	1205X214X51
TL-WPSLY1-03	90W	9900 lm	110lm/W	3000K/6000K	1505X214X51
TL-WPSLY1-04	100W	1100 lm	110lm/W	3000K/6500K	1505X214X51

