



TL-WPSLY4



Weatherproof Surface or Suspended fixture. Fitting manufactured according to the EN / IEC 60598-1:2015 rules.

Longer life (L80B10 @ 50,000 hours)

Body / Diffuser : ABS / PMMA (Ammonia Resistant & Corrosion Resistant)

Light Source: Philips

Driver: Philips

Input Voltage: 200- 240V AC, 50-60 HZ

Operating Temperature: - 20°C + 55°C

Beam Angle: 140°

IP Rating: IP69K

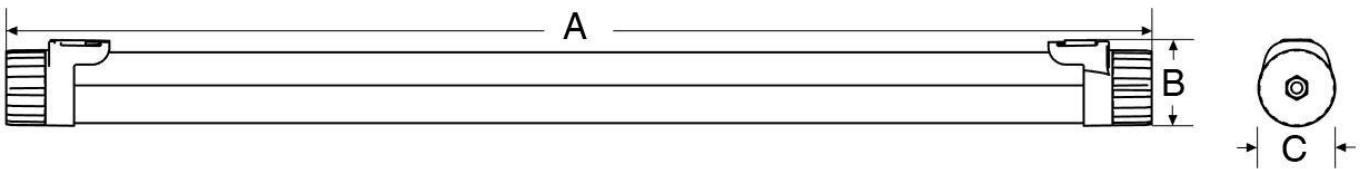
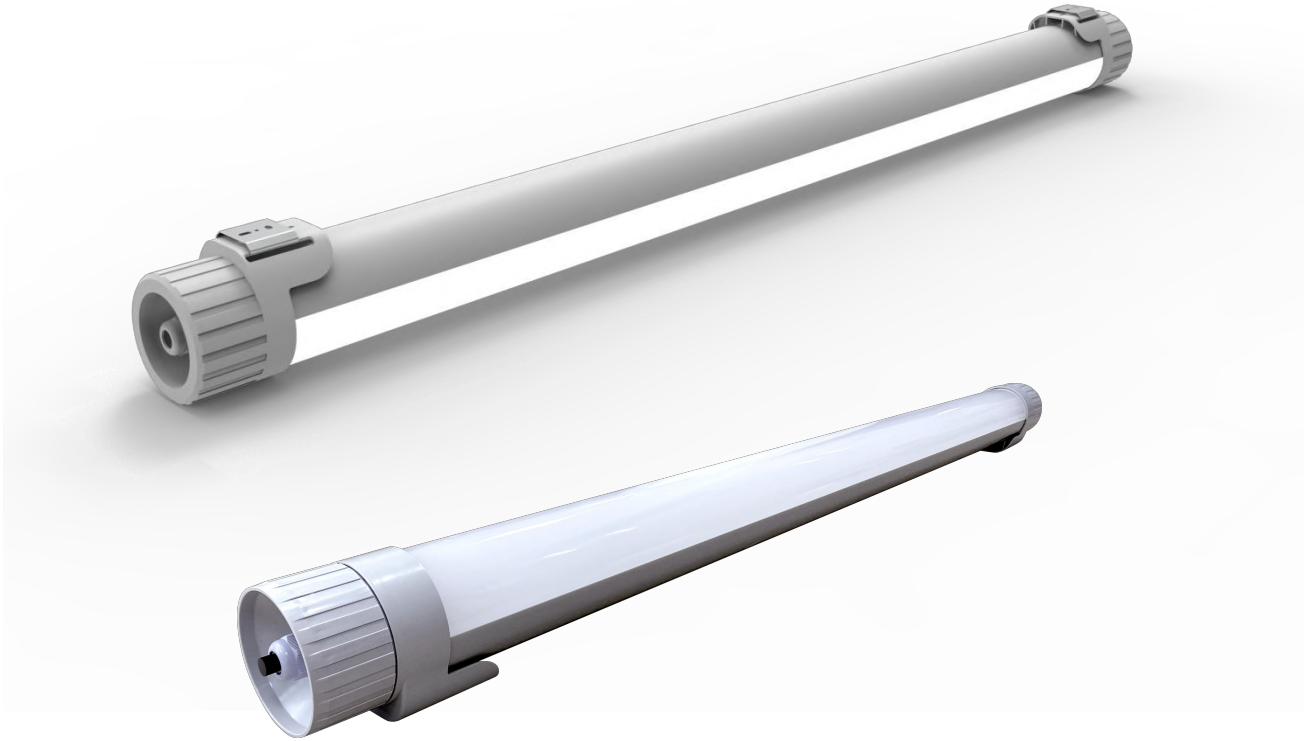
Body Color: White / Grey

Dimmable: 1-10V & Dali

Sensor: Microwave Sensor

On Request: Other Wattage & Dimension Variants





Product Variants

Product Code	Wattage	Lumen	Efficiency	CCT	Dimension (AXBXC)
TL-WPSLY4-01	20W	2600 lm	130lm/W	3000K/6000K	1180X96X86 MM
TL-WPSLY4-02	40W	4800 lm	120lm/W	3000K/6000K	1180X96X86 MM
TL-WPSLY4-03	30W	3900 lm	130lm/W	3000K/6000K	1480X214X51 MM
TL-WPSLY4-04	50W	6000 lm	120lm/W	3000K/6500K	1480X214X51 MM

Beam Angle: 140°

