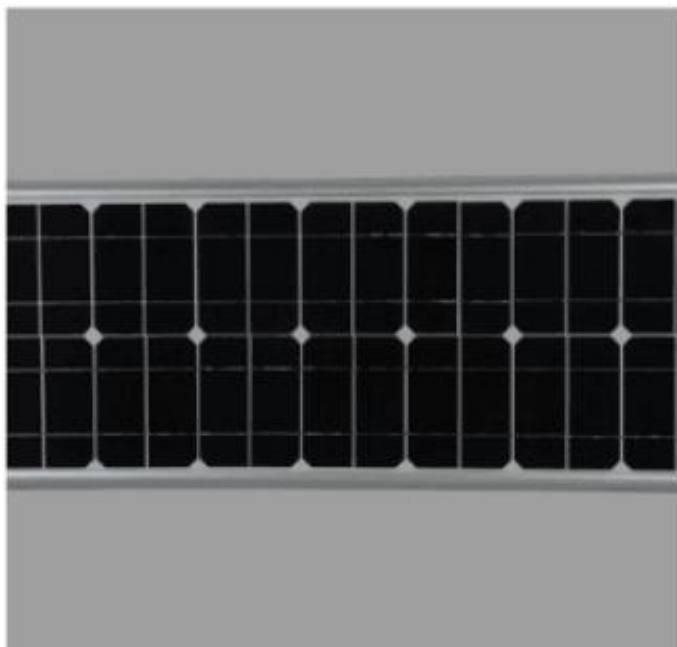




Details				Picture
Power	Specifications			
<b>40W</b>	Solar panel	Max Power	18V/50W (High-efficiency monocrystalline solar panel)	
		Lifespan	25 years	
	Battery	Model	Lithium battery 12.6V,22AH (Lithium battery)	
		Lifespan	5-8 years	
	LED Chip	Power	96pcs ( Philips chip ,Aluminum PCB plate)	
		Chip brand	Cree SMD3030	
		Lumen	6000-6500lm	
		Lifespan	50000 hours	
	Install distance	Install height: : 5-6M Install horizontal spacing :25-30M		
	Install position	Light pole branch diameter: 60-100mm		
	Light body material	Aluminium alloy		
	Charging time	6 hours of effectively sun light		
	Working time	Light 10 to 12 hours every day, sustainable 3-7rainy day		
	Switching mode:	time control + light sensor control+ motion sensor control		
	Certification	CE、 ROHS		
	Size	Product size:L765*W370*H44mm Packing Size: 80*41*17cm 1 pcs /carton		
Weight	Net weight:8.4 KG		Gross weight:9.0KG	
Warranty	7 years warranty			







Sun charging in daytime



When people leave  
50% brightness



When people close  
100% brightness



## Luminaire Property

Luminaire Description: T42-40W  
 Luminaire Category:  
 Lamp Category:  
 Lamp Description:  
 Number of Lamp:  
 Lamp Lumens(lm): 4226.87  
 Luminous Length(m): 0.0  
 Luminous Width(m): 0.0  
 Luminous Height(m): 0.0

Voltage: 240.3 V  
 Current: 0.874 A  
 Power: 205.34 W  
 Power Factor: 0.977  
 Test Lab:  
 Photometric Type: Type C  
 Manufacturer:

## Photometric Results

CIE Class: Direct  
 Measurement Flux: 4226.87 lm  
 Efficiency: 20.5847 lm/W  
 Central Intensity: 1358.114cd  
 Max. Intensity: 1936.411cd  
 Field Angle(10%Imax): Left: -138.9 Right: 14.5

Max.Intensity Angle: C:0.0 G:63.0  
 Beam Angle(50%Imax): L: -134.4 R:10.5  
 Luminaire Efficacy Rating(LER) : 100.00%  
 Upward Ratio: 0.0%  
 Downward Ratio: 100.0%  
 Beamwidth(50%Imax): C0/180 = 130.59 C90/270 = 80.57

