



TL-DLKH6



Recessed Mounted downlight light fixture. Fitting manufactured according to the EN / IEC 60598-1:2015 rules.

Longer life (L90B10 @ 50,000 hours)

Body Type: High Purity Aluminium

Light Source: COB

Driver: Lifud, Eaglerise, Tridonic or Equivalent

Chromaticity tolerance (MacAdam) : 3

Input Voltage: 220-265V AC 50/60HZ

Driver Protection: Class I

Frame Color: White, Black

Reflector Color: White, Black, Matt Black, Silver

IP Rating: IP40

Emergency Kit: Tridonic

Dimmable: 1-10V, Dali, IGBT

On Request: Other Wattage & Dimension Variants



PHILIPS
TRIDONIC
CREE 





TL-DLKH6A



TL-DLKH6B



Product Variants

Reflector Colors Option: White, Black, Matt Black, Silver

| Product Code | Wattage | Lumen | Beam Angle | CCT | Size /Cutout (mm) |
|------------------|---------|--------|---------------|---------------|----------------------|
| TL-DLKH6A-01-7W | 7W | 700lm | 15°, 24°, 36° | 2700K - 6500K | Φ62*82H / 55mm |
| TL-DLKH6A-01-10W | 10W | 1000lm | 15°, 24°, 36° | 2700K - 6500K | Φ85*95H / 75mm |
| TL-DLKH6A-01-20W | 20W | 2000lm | 15°, 24°, 36° | 2700K - 6500K | Φ105*118H / 95mm |
| TL-DLKH6B-02-7W | 7W | 700lm | 15°, 24°, 36° | 2700K - 6500K | 62*62*82H / 55*55 |
| TL-DLKH6B-02-10W | 10W | 1000lm | 15°, 24°, 36° | 2700K - 6500K | 85*85*95H / 75*75 |
| TL-DLKH6B-02-20W | 20W | 2000lm | 15°, 24°, 36° | 2700K - 6500K | 105*105*118H / 95*95 |



TRIMLESS



TL-DLKH6C



TL-DLKH6D

Product Variants

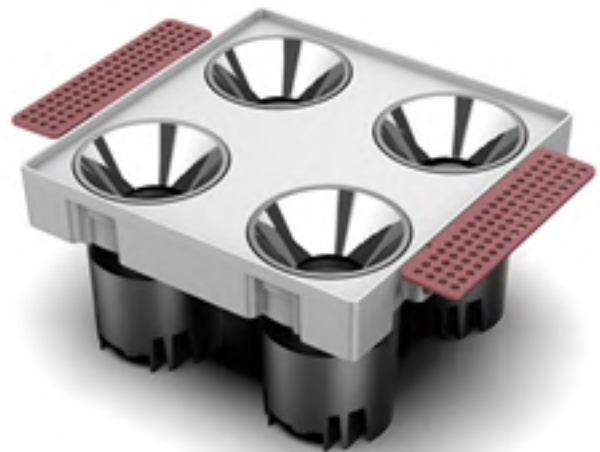
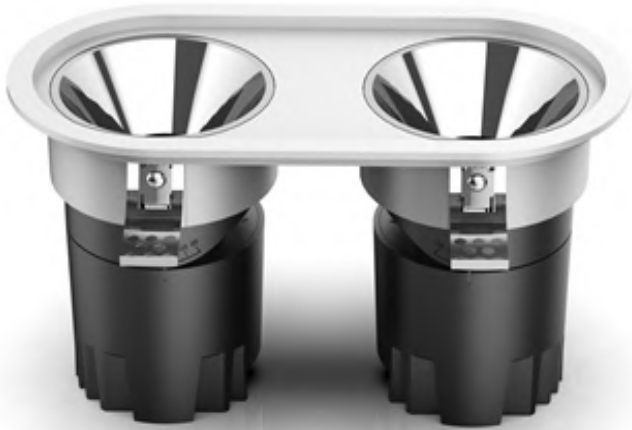
Reflector Colors Option: White, Black, Matt Black, Silver

| Product Code | Wattage | Lumen | Beam Angle | CCT | Size /Cutout (mm) |
|-------------------|---------|--------|---------------|---------------|-----------------------|
| TL-DLKH6C-03-7W | 7W | 700lm | 15°, 24°, 36° | 2700K - 6500K | Φ52*82H / 55mm |
| TL-DLKH6C-03-10W | 10W | 1000lm | 15°, 24°, 36° | 2700K - 6500K | Φ73*95H / 75mm |
| TL-DLKH6C-03-20W | 20W | 2000lm | 15°, 24°, 36° | 2700K - 6500K | Φ95*118H / 98mm |
| TL-DLKH6D-04-20W | 20W | 2000lm | 15°, 24°, 36° | 2700K - 6500K | 146*180*102H / 190*85 |
| TL-DLKH6D-04A-20W | 20W | 2000lm | 15°, 24°, 36° | 2700K - 6500K | 195*97*95H / 190*90 |



TL-DLKH6E

TL-DLKH6F



TL-DLKH6G

TL-DLKH6H

Product Variants

Reflector Colors Option: White, Black, Matt Black, Silver

| Product Code | Wattage | Lumen | Beam Angle | CCT | Size /Cutout (mm) |
|------------------|---------|--------|---------------|---------------|------------------------|
| TL-DLKH6E-05-20W | 20W | 2000lm | 15°, 24°, 36° | 2700K - 6500K | 195*97*95 / 185*85*105 |
| TL-DLKH6F-06-20W | 20W | 2000lm | 15°, 24°, 36° | 2700K - 6500K | 195*97*95 / 185*85*105 |
| TL-DLKH6G-07-40W | 40W | 4000lm | 15°, 24°, 36° | 2700K - 6500K | 195*190*103 / 185*185 |
| TL-DLKH6H-08-40W | 40W | 4000lm | 15°, 24°, 36° | 2700K - 6500K | 182*243*103 / 185*185 |





Product Variants

Reflector Colors Option: White, Black, Matt Black, Silver

| Product Code | Wattage | Lumen | Beam Angle | CCT | Size /Cutout (mm) |
|------------------|---------|--------|------------|---------------|-------------------|
| TL-DLKH6I-09-10W | 10W | 1000lm | Assymetric | 2700K - 6500K | Φ85*87H / 75mm |
| TL-DLKH6I-09-20W | 20W | 2000lm | Assymetric | 2700K - 6500K | Φ105*105H / 95mm |

