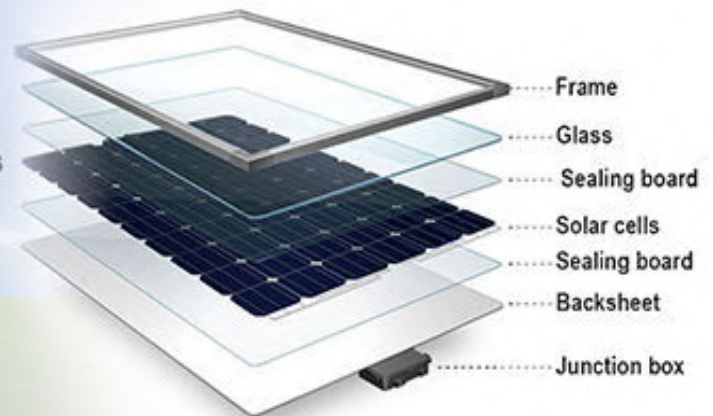


TL-S-PTHMDA SERIES



Monocrystalline Solar Panel

Monocrystalline silicon solar photovoltaic panels have high photoelectric conversion efficiency. To be fully charged in only 6--8 hours.



Body Type: Aluminium

Diffuser: UV stabilized PC

Solar Panel: Mono Crystalline

Battery: LifePO4 Lithium Battery

Working Mode: Intelligent Control

Light Source: Philips Or Equivalent

Color Temperature: 2700K to 6500K

Beam Angle: 75°+140°

IP Rating: IP65

Lumens: 28000 lm - 8000 lm

Charging Time: 4 - 5 Hours Direct Sunlight

Body Color: White as Standard / Other Color on Request

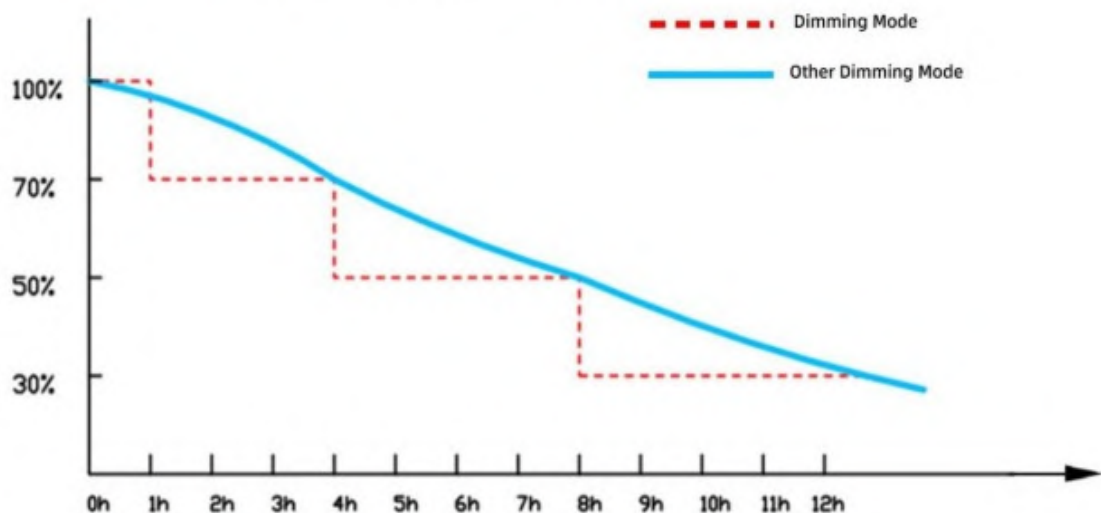
Weight: 28 Kg

Working Mode 1 : Smart Lighting Mode Settable as per Requirement



SMART LIGHTING MODE

Automatic Time Control Mode



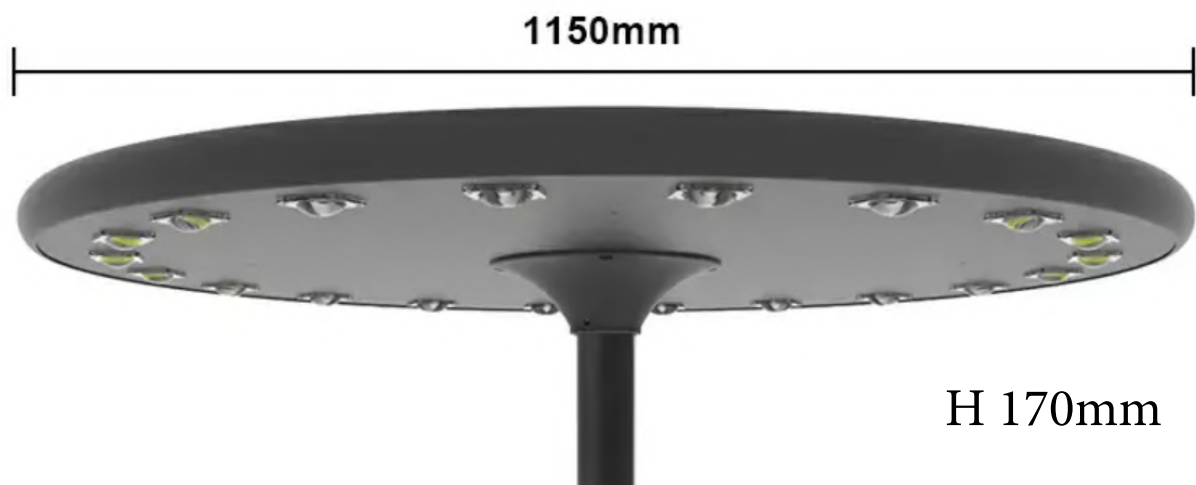
Automatic charging during the day, automatic lighting at night, alternating day and night

1 hour 100% brightness; 2-4 hours 70% brightness

4-8 hours 50% brightness; 8-12 hours 30% brightness

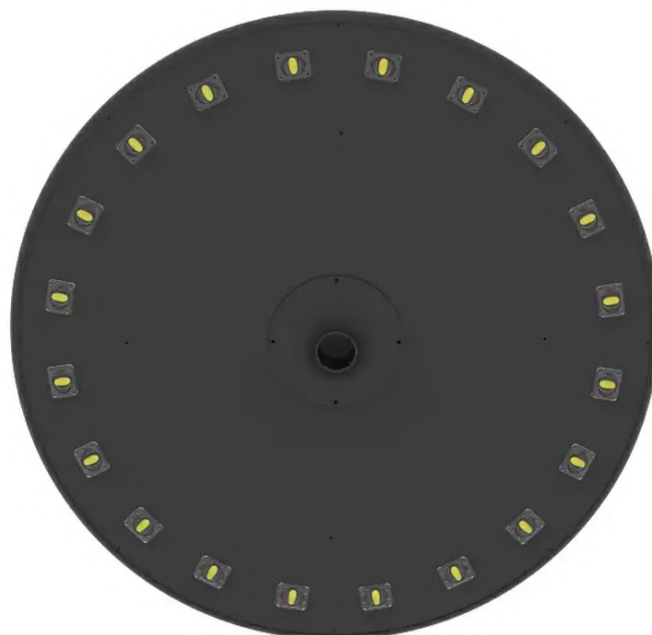
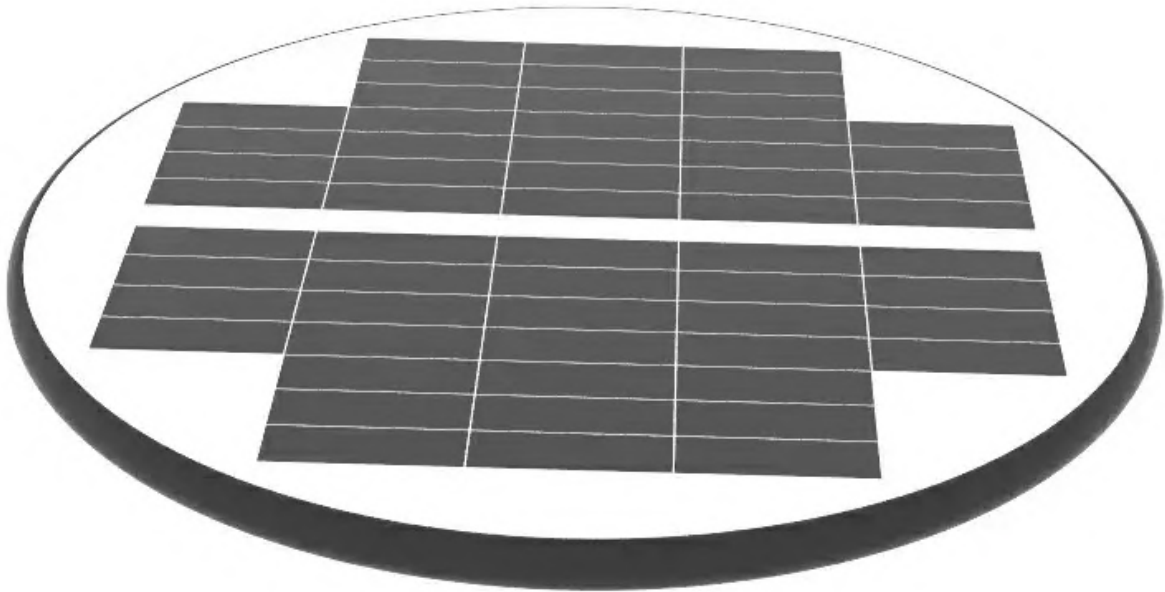
Working Mode 2 : 100% Brightness 1- 12 hours





TEMPLUX

28000 lm - 8000 lm



TEMPLUX